

### MAGLIA 60349

Knitted skilfully and sustainably

Fique is practically the national fiber of Colombia. Used in former times for the production of coffee bags and agricultural yarns, this natural resource was discovered by Ruckstuhl by a miraculous coincidence, when partnership with a knitting enterprise in the Colombian heartland first gave a hint of what could be achieved using this durable and versatile fiber. Today the natural material is spun by hand in Colombia's Curití region, and then knitted into uniquely beautiful carpets using big knitting needles. Maglia is the name of the collection created in this way. It comes in five vivid colour combinations. The craftsmanlike processing of the irregular material results in wonderfully authentic patterns.

DESIGNER	Ruckstuhl
YEAR	2014
COLLECTION	Sisal
SUGGESTED APPLICATION	Residential: area rug
MATERIAL	Fique
SURFACE	fique
COMPOSITION	100% fique
BACKING	without
WIDTH OF ROLLS	-
LENGTH OF ROLLS	-
AREA RUGS	approx. 300 x 200
BINDING	Borderless
REPEAT	-
PILE WEIGHT	approx. 3600
TOTAL WEIGHT	approx. 3600
TOTAL HEIGHT	approx. 14
THERMAL RESISTANCE	-
SURFACE RESISTANCE	- Ω
CONTACT RESISTANCE	- Ω
BURNING CLASS	

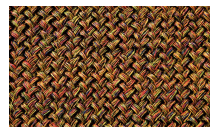
### COLORS



MAGLIA 60349



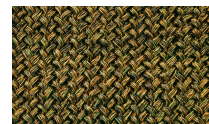
MAGLIA 60352



MAGLIA 10270



MAGLIA 20453



MAGLIA 20460