

**LITO 2**

Lavabo sagomato in marmo bianco di Carrara con appoggio a terra, con o senza foro per rubinetto, a scarico libero, kit di fissaggio a pavimento escluso ma obbligatorio. È possibile l'invio anticipato del kit di fissaggio per ancoraggio al sottofondo.

Utilizza piletta .METO415. È obbligatorio l'utilizzo di sifone a bottiglia. È possibile lo scarico a pavimento (obbligatorio l'art AKIT0811).

Floor standing washbasin carved in white Carrara marble, available with or without tap hole, without overflow. Compulsory floor fixing kit must be ordered separately. It is possible to order the fixing kit in advance to allow fixing under finished floor surface.

Designed to take waste .METO415. It must be fitted with a bottle trap. It is possible to connect it to the drain through the floor (requires AKIT0811).

ART. / ITEM

**ACER0732**

CAPACITÀ / CAPACITY

- lt  
- gall

PESO / WEIGHT

153 kg  
337 lb

IMBALLO / PACKAGING

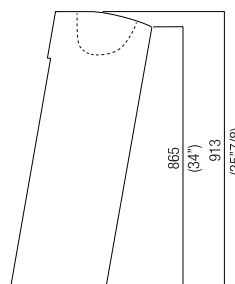
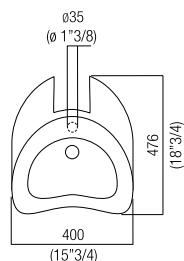
56 x 57 x 110 cm  
22" x 22" 4/8 x 43" 2/8



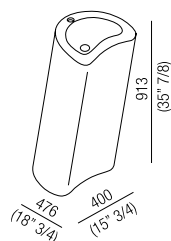
PESO TOTALE / TOTAL WEIGHT

190 kg  
419 lb

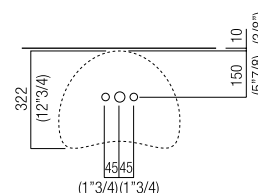
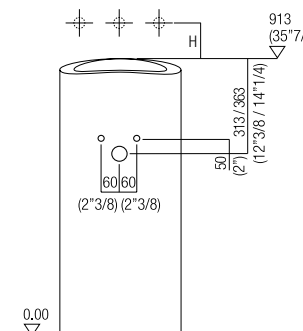
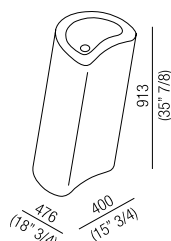
1:25



CER732



CER732R



**ABBINAMENTO RUBINETTERIA / TAP COMBINATION**

Rubinetteria a parete / Wall mounted tap:

FEZ ARUB12025, ARUB13025

Monoforo / One-hole tap:

FEZ ARUB10012S/0

SQUARE ARUB0950

Rubinetteria a pavimento / Floor mounted tap:

FEZ ARUB146

SEN ASEN0962

SQUARE ARUB1020

Distanza tra lavabo e rubinetteria  
Distance between washbasin and tap

H mm	Rubinetteria / Taps
120 (4" 3/4) - 150 (5" 7/8)	Fez

**FISSAGGIO / FIXING**

Il lavabo è fissato a pavimento con staffa metallica da ancorare nel sottofondo.

The washbasin is fixed to the floor with a metal bracket located under the floor surface.

con riserva di variazioni tecniche e tolleranze / Agape srl reserves the right to technical/tolerance changes